

Kessil®

Saltwater LED Light

A360WE Tuna Blue

A360NE Tuna Blue

A160WE Tuna Blue



Advanced Thermal Design

Innovative heat management system equals efficiency and longevity

A Different Breed of LED

Densely packed high power LED array emits more light than the competition

Superior Optical Design

Expert optic construction for a beautiful shimmer

APEXREADY

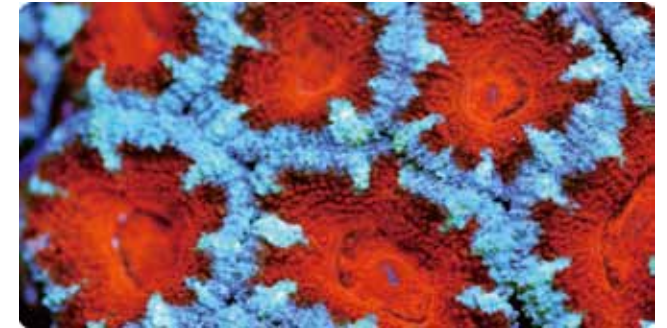
Join the Spectral Revolution!

At the junction of performance and aesthetics, Kessil introduces revolutionary lighting that captures the power of the sun. Kessil's award winning lights address all the needs of saltwater tanks while remaining simple and accessible.



Shimmer

Kessil lights are the only LEDs capable of producing a spectacular shimmer that rivals MH. The effect gives the look of natural sunlight on a coral reef. It's like having your own piece of the ocean.



Spectrum

Kessil LED chips are manufactured in-house with spectrums customized for aquarist needs. Dense Matrix™ technology is used to build LED arrays with unique spectral blends. A proprietary blend of UV light enhances coral growth and color.



Penetration

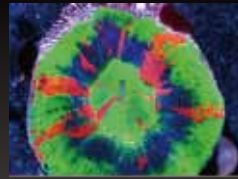
Patented Dense Matrix LED™ technology concentrates multiple LED chips into a single light source, creating better and deeper penetration, without sacrificing coverage. New E-Series LEDs are 15% brighter.



Tunability

Tune the spectrum (10,000K – Actinic) and intensity for a personalized look. Kessil Logic™ maintains consistent output across the tunable spectrum.

LED Aquarium Lighting



Like Us

facebook.com/Kessil.LED



Watch Us

youtube.com/user/KessilTube



Follow Us

twitter.com/Kessil



Visit Us

Scan this code on your smart-phone to learn more about Kessil

General Specifications

Product Series	A360NE	A360WE	A160WE
FPower Supply	100-240V AC (input) 19V DC (output)	100-240V AC (input) 19V DC (output)	100-240V AC (input) 19V DC (output)
Fixture Dimensions	4.5" x 4"	3.6" x 4"	4" x 2.48"
Coverage Area	18" surface diameter	24" surface diameter	12"- 24" surface diameter
Power Consumption	90W MAX	90W MAX	40W

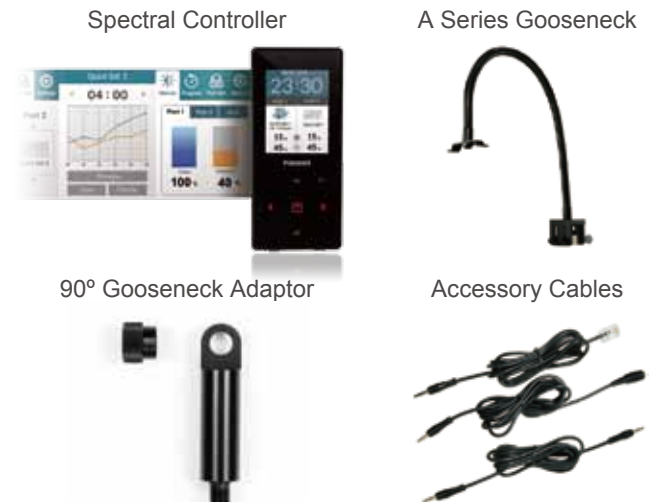
Controllability



- Compatible with 0 ~ 10V external controllers*
- Multiple lights can be daisy-chained for control by either a single external controller or first light in chain

* Cables sold separately

Accessories



Please visit www.kessil.com for details.

Kessil Lighting

A DiCon Brand

1689 Regatta Blvd, Richmond, CA 94804

(510) 620-5250

www.kessil.com